



Whitemoss AAC

scottishathletics

National Club Leaders Conference 2015

Hilton, 31st October 2015

*Sandra Frame, Trustee & Vice Chair
Mark Stringer, Trustee & Secretary*



Trials and tribulations of building your own facility.



Overview

- Background & Drivers
- Leadership & Project Management
- Implications
 - Partnership
 - Finance
 - Legal
- Challenges
- Reflection & Key Messages
- Future Plans
- Q & A



Background

- Established 20 August 1990
- 2009 - Crisis
- 2010 - New Committee & New Financial Model
- 2011
 - Registered SCO
 - Club Survey
 - Development Plan

Motivation



More Coaches



More Athletes



More Officials

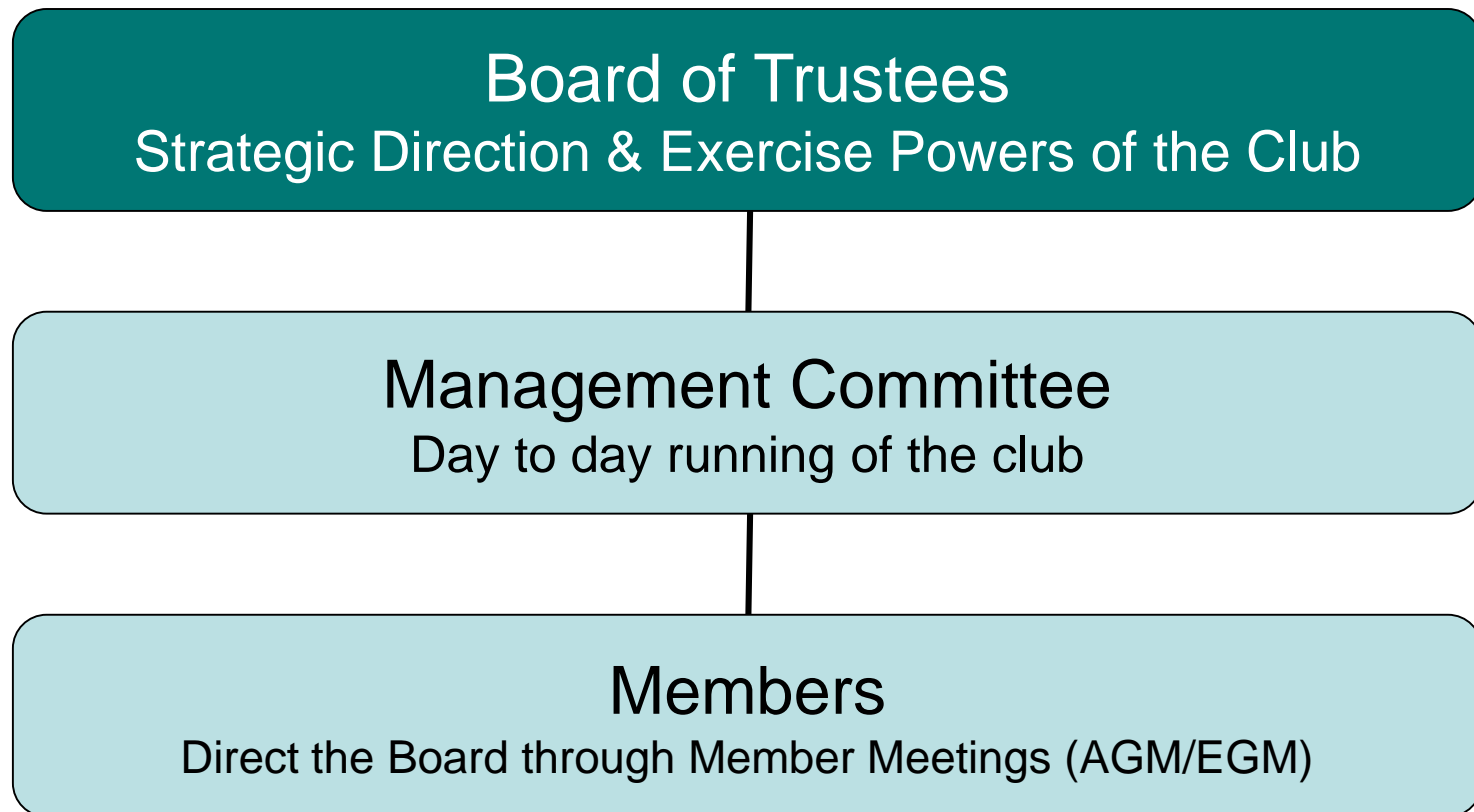


More Volunteers





Leadership & Governance



Project Management



Board & Skill Set

- Technical Project Manager
- Quantity Surveyor
- Construction Manager
- Legal Representation
- Land Lease (SLC)
- Planning Permission
- Formal Tendering Process
- Bill of Quantities
- Minor Works Contract – Builder
- Funding Conditions



Partnerships



- SAL
- SLC – ES &SD
- East Kilbride AC
- **sportscotland**
- Biffa Award
- The Robertson Trust



Financial Management



£30.5K
Whitemoss AAC

£69K
sportscotland

£196K

£42K
Biffa Award

£4.5K
East Kilbride AC

The Robertson Trust
£20K

£30K
Whitelees WFCF



Legal



- SCIO
- Land Lease
- Planning Permission
- Formal Tendering Process
- Minor Works Building Contract
- Access Agreement



Challenges



- Funding
- Timescales
- Water Services
- Building Control Requirements
- Managing Expectations



Reflection



- Internal Technical Expertise
- Technical Project Management
- Services
- Partnerships
- Communication





Key Messages

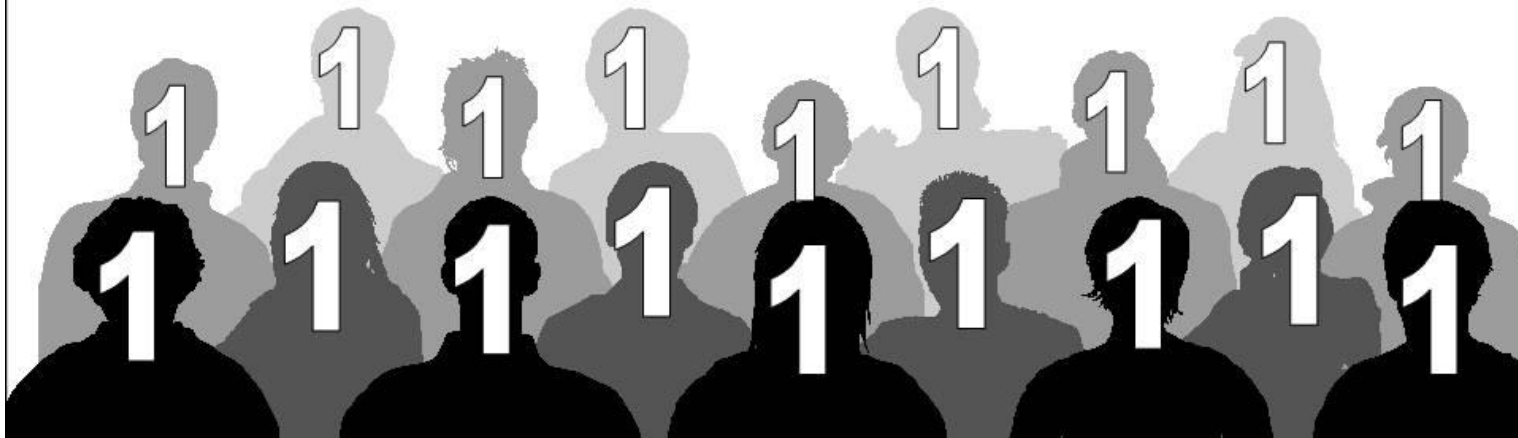
- Strong & Capable Leadership
- Right People, Right Job, Right Time
- Clear Vision
- Who Can Help
- Inspire & Engage
 - Membership
 - Partners
 - Funders
- Stay Resolute – Your Aspiration
- Corrective Action

Future Plans



- Income Generation Plan
- Grow & Develop Club
 - CTO
 - DCI Programme
- Future Ambitions
 - Technical Learning Centre
 - Track Stand

If your audience could only remember one thing from your presentation, what should it be?



Belief



Two storey building (Lower Floor)

- 5 gallery windows
- Flexible space (classroom environment, rest and recover, strength & conditioning)
- 2 equipment stores (WAAC & EKAC)
- Admin Office (WAAC & EKAC)
- 2 less able toilets
- Single person platform lift
- Stairs to upper floor

Two storey building (Upper Floor)

- Coaches library / meeting space
- Large storage area
- 2 toilets



Q & A